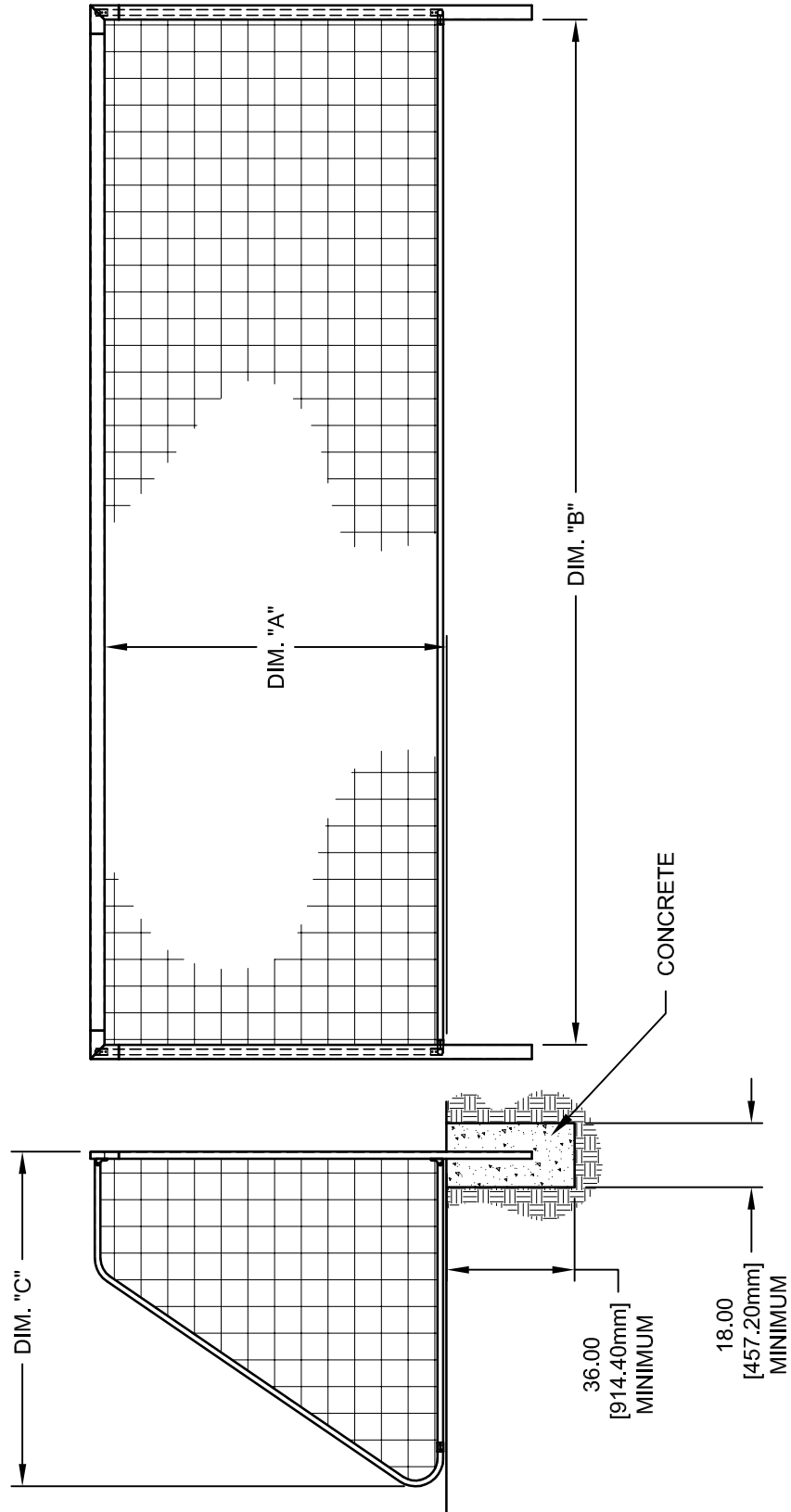


2.0" [50.8 mm] X 4.0" [101.6 mm] RECTANGULAR EXTRUDED ALUMINUM FRAME.
 1-5/8" [41.28 mm] O.D. GALVANIZED STEEL BACKSTAY.
 PLATED CONNECTION HARDWARE.

| SG22 SERIES SOCCER GOAL | | | | |
|-------------------------|------------------------------|------------------------------|------------------------------|--|
| MODEL | DIM. "A" Ft.-In. (Meters) | DIM. "B" Ft.-In. (Meters) | DIM. "C" Ft.-In. (Meters) | |
| SG22824 | 8'-0" (2.44M) | 24'-0" (7.32M) | 8'-2" (2.49M) | |
| SG22721 | 7'-0" (2.13M) | 21'-0" (6.40M) | 7'-1" (2.16M) | |
| SG22618 | 6'-6" (1.83M) | 18'-0" (5.49M) | 6'-1" (1.85M) | |

NET SHOWN IS OPTIONAL AND MUST BE SPECIFIED SEPARATELY.
 "J" STAKE BACKSTAY ANCHORS SUPPLIED AS STANDARD. UNDERGROUND ANCHORS
 AVAILABLE AS AN OPTION AND AT ADDITIONAL COST.
 NEVER CLIMB OR HANG ON THE NET OR GOAL FRAMEWORK.



| REVISION | | |
|----------|----------|-----|
| REV. | DATE | BY |
| A | 06/02/08 | JJC |
| B | 01/25/11 | JJC |
| | | |
| | | |
| | | |
| | | |
| | | |




Gared Holdings, LLC
 9200 E. 146th St. Noblesville, IN 46060

THIS DOCUMENT CONTAINS TRADE SECRET AND OTHER MATERIALS WHICH ARE PROTECTED BY CONFIDENTIALITY NOTICE AND AGREEMENT AND BY COPYRIGHT. ANY USE OR COPYING OF THIS DOCUMENT EXCEPT AS AUTHORIZED BY GARED HOLDINGS, LLC IS STRICTLY PROHIBITED.

RECTANGULAR FRAME PERMANENT SOCCER GOAL

| | | | | | |
|---|-----------|----------|-------------|----------|------|
| DRAWN | CONNERLEY | DATE | 12/17/07 | MATERIAL | N/A |
| APPROVED | JJC | DATE | 12/15/07 | FINISH | N/A |
| FILE LOC. Q:\Final Release\Specifications | | | | DWG. NO. | SG22 |
| SIZE | SCALE | SHT. NO. | PART NO. | REV | |
| A | NOTED | 1 OF 1 | SG22 SERIES | B | |



MODEL SG22

PERMANENT SOCCER GOAL

This unit is designed for multi-use fields. Upright posts and cross bar are constructed of 2" x 4" rectangular extruded aluminum tubing. Backstays and rear stabilizing bar constructed of 1 5/8" O.D. heavy wall galvanized steel tubing. Available in 3 goal sizes (see below for goal size). Standard finish is white powder coat on main goal frame. Optional finish is natural (unpainted).

Unit shall be designed for permanent installation. Upright posts are to be installed with a concrete footing approximately 18" in diameter and 36" deep. Post shall extend approximately 24" into concrete footing.

Sold in pairs.

SG22824 - Size is 8' high x 24' wide x 8' deep

SG22721 - Size is 7' high x 21' wide x 7' deep

SG22618 - Size is 6'-6" high x 18' wide x 6' deep

Meets NCAA, NFSHSA and FIFA specifications.

Goal includes "J" stakes and net clips. Net not included.

Optional Equipment:

| | |
|------|--|
| SGWK | Wheel adapter kit |
| SGUA | Soccer Goal Underground Anchoring System |

Nets

| | |
|----------|---|
| SN824-4W | Braided 4mm white soccer net, 8'H x 24'W |
| SN824-4O | Braided 4mm orange soccer net, 8'H x 24'W |
| SN824-3W | Braided 3mm white soccer net, 8'H x 24'W |
| SN721-3W | Braided 3mm white soccer net, 7'H x 21'W |
| SN721-3O | Braided 3mm orange soccer net, 7'H x 21'W |
| SN618-2W | Braided 2mm white soccer net, 6'H x 18'W |
| SN618-2O | Braided 2mm orange soccer net, 6'H x 18'W |