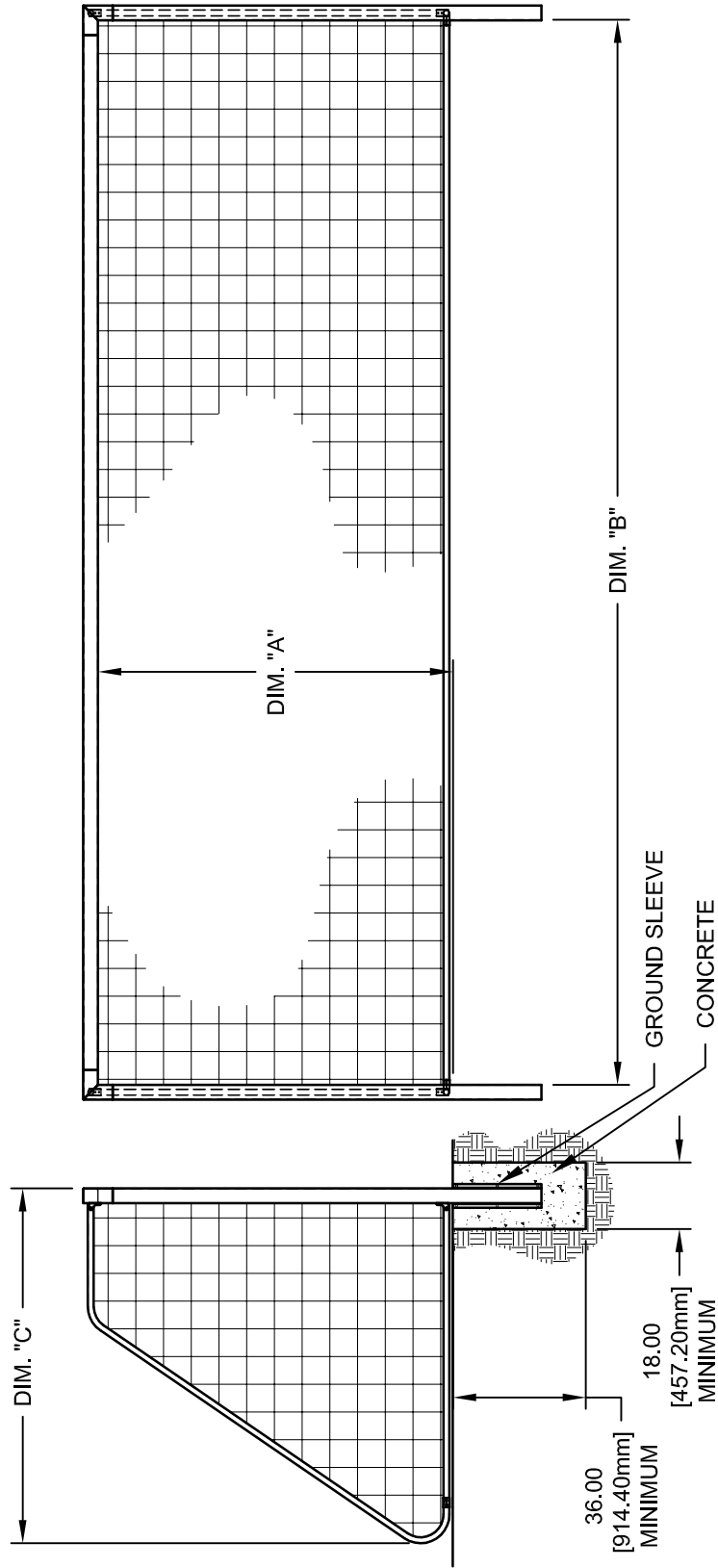


4.0" [101.6 mm] SQUARE EXTRUDED ALUMINUM FRAME.
 1-5/8" [41.28 mm] O.D. GALVANIZED STEEL BACKSTAY.
 PLATED CONNECTION HARDWARE.

SG14 SERIES SOCCER GOAL

MODEL	DIM. "A"		DIM. "B"		DIM. "C"	
	Ft.-In. (Meters)	Ft.-In. (Meters)	Ft.-In. (Meters)	Ft.-In. (Meters)	Ft.-In. (Meters)	Ft.-In. (Meters)
SG14824	8'-0" (2.44M)	24'-0" (7.32M)	8'-2" (2.49M)			
SG14721	7'-0" (2.13M)	21'-0" (6.40M)	7'-1" (2.16M)			
SG14618	6'-6" (1.83M)	18'-0" (5.49M)	6'-1" (1.85M)			

NET SHOWN IS OPTIONAL AND MUST BE SPECIFIED SEPARATELY.
 "J" STAKE BACKSTAY ANCHORS SUPPLIED AS STANDARD. UNDERGROUND ANCHORS
 AVAILABLE AS AN OPTION AND AT ADDITIONAL COST.
 SECURELY ANCHOR OR COUNTERWEIGHT GOALS AT ALL TIMES. SEE NOTICE BELOW.
 NEVER CLIMB OR HANG ON THE NET OR GOAL FRAMEWORK.
 GOALS SUPPLIED WITH GROUND SLEEVES FOR SEMI-PERMANENT INSTALLATION.



NOTICE

CONSUMER PRODUCT SAFETY ALERT

From the U.S. Consumer Product Safety Commission, Washington, D.C.

Portable/Moveable Soccer Goals can fall over causing serious injury or death. Securely anchor or counterweight portable goals at ALL times. Check ALL connecting hardware before EVERY use. When goals are not in use: tip goal on face, chain to nearby fence or store in secure area.

REVISION		
REV.	DATE	BY
A	06/02/08	JJC
B	01/25/11	JJC




Gared Holdings, LLC
 9200 E. 146th St. Noblesville, IN 46060

THIS DOCUMENT CONTAINS TRADE SECRET AND OTHER MATERIALS WHICH ARE PROTECTED BY CONFIDENTIALITY NOTICE AND AGREEMENT AND BY COPYRIGHT. ANY USE OR COPYING OF THIS DOCUMENT EXCEPT AS AUTHORIZED BY GARED HOLDINGS, LLC IS STRICTLY PROHIBITED.

4" SQUARE FRAME SEMI-PERMANENT SOCCER GOAL

DRAWN	CONNERLEY	DATE	12/17/07	MATERIAL	N/A
APPROVED	JJC	DATE	12/15/07	FINISH	N/A
FILE LOC.	Q:\Final Release\Specifications			DWG. NO.	SG14
SIZE	SCALE	SHT. NO.	PART NO.	SG14 SERIES	
A	NOTED	1 OF 1			
				REV	B



MODEL SG14

SEMI-PERMANENT SOCCER GOAL

This unit is designed for multi-use fields. Upright posts and cross bar are constructed of 4" square extruded aluminum tubing. Backstays and rear stabilizing bar constructed of 1 5/8" O.D. heavy wall galvanized steel tubing. Available in 3 goal sizes (see below for goal size). Standard finish is white powder coat on main goal frame. Optional finish is natural (unpainted).

Ground sleeves for mounting supplied with goal.

Unit shall be designed for permanent installation. Ground sleeves to be installed with a concrete footing approximately 18" in diameter and 36" deep. Post shall extend approximately 24" into concrete footing.

Upright posts fit securely into ground sleeves and backstay shall be anchored to prevent inadvertent removal from the sleeves.

Sold in pairs.

SG14824 - Size is 8' high x 24' wide x 8' deep

SG14721 - Size is 7' high x 21' wide x 7' deep

SG14618 - Size is 6'-6" high x 18' wide x 6' deep

Meets NCAA, NFSHSA and FIFA specifications.

Goal includes "J" stakes and net clips. Net not included.

Optional Equipment:

SGWK	Wheel adapter kit
SGUA	Soccer Goal Underground Anchoring System

Nets

SN824-4W	Braided 4mm white soccer net, 8'H x 24'W
SN824-4O	Braided 4mm orange soccer net, 8'H x 24'W
SN824-3W	Braided 3mm white soccer net, 8'H x 24'W
SN721-3W	Braided 3mm white soccer net, 7'H x 21'W
SN721-3O	Braided 3mm orange soccer net, 7'H x 21'W
SN618-2W	Braided 2mm white soccer net, 6'H x 18'W
SN618-2O	Braided 2mm orange soccer net, 6'H x 18'W

***CONSUMER PRODUCT SAFETY ALERT**

From the U.S. Consumer Product Safety Commission, Washington, D.C.

Portable/Movable Soccer Goals can fall over causing serious injury or death. Securely anchor or counter weight portable goals at ALL times. Check ALL connecting hardware before EVERY use. When goals are not in use: tip goal on face, chain to nearby fence or store in secure area.

Subject to design change and current manufacturing practices.
Revised March 25, 2013 ©2008 Gared Holdings, LLC