

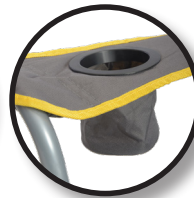
Compact, Portable, and above all, Comfortable!



- Sturdy steel frame for long lasting construction.
- Supports up to 500 lbs.
- Oversized seat and back gives extra comfort and stability.
- Opens and folds in seconds, easy to use and store.
- 2 all-fabric oversized cup holders.
- Stain and moisture resistant 600x300D fabric with PE coating.



BONUS! Features rugged fabric carry bag for convenient portability & storage.



#150239
Gray Fabric
Silver Frame



0 85955 06768 1

#158334
Black Fabric
Silver Frame



0 85955 08128 1

Packaging Specifications

Master Carton:

Contents: 4-pack

Master Carton Weight:

38.55 lbs. / 17.5 kg

Master Carton Dimensions:

37.8 x 12.2 x 11 in.

96 x 31 x 28 cm

Retail Box:

Contents: 1 chair

Box Weight:

9.47 lbs. / 4.3 kg

Box Dimensions:

37.8 x 6.5 x 6.5 in.

96 x 16.5 x 16.5 cm

Container Qty's:

40 ft.: 2352

40 ft. HQ: 2920

45 ft. HQ: 3320

